



APPENDIX B – Draft Site Layout and Transmission Run

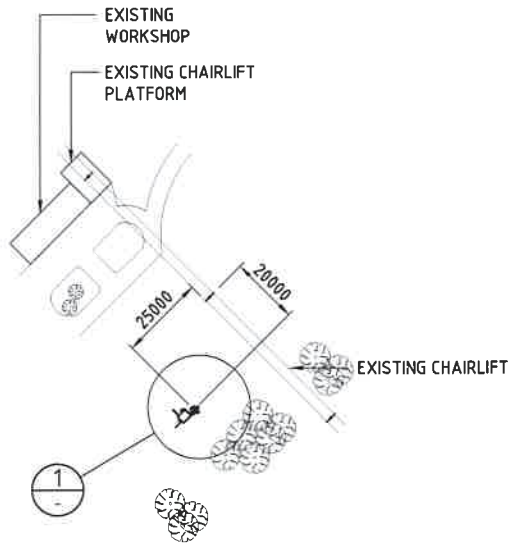


PROPOSED OPTUS
BASE STATION



LOCALITY MAP

COPYRIGHT © WWW.WHEREIS.COM.AU



OVERALL SITE PLAN

SCALE 1:1500

PROPOSED OPTUS RRU's
INSIDE HEADFRAME
(INDICATIVE ONLY)

PROPOSED OPTUS
UNDERGROUND CONDUITS
FROM SHELTER FLOOR TO PIT

PROPOSED OPTUS PHASE 8
EQUIPMENT SHELTER WITH
STONE EDGING AROUND

PROPOSED OPTUS
ELECTRICAL SUPPLY

PROPOSED OPTUS
FIBRE SUPPLY

PROPOSED OPTUS
Ø600 PIER (TYP)

PROPOSED OPTUS
25.0m MONOPOLE

PROPOSED OPTUS
CIRCULAR HEADFRAME

PROPOSED OPTUS PANEL
ANTENNA WITH MHA's /
COMBINERS BEHIND (TYP)

SECTOR 1
60°

MGA ZONE	56
E	616 499
N	5 959 670
AT	CL. OF MONOPOLE

SECTOR 2
120°

SECTOR 3
200°

PROPOSED DRAW PIT WITH
CABLE TRAY COVER UP TO THE
PORT HOLE AT BASE OF POLE

DETAIL 1

scale 1:100

NOTE:
THIS DRAWING IS DIAGRAMMATIC ONLY
AND SHOULD NOT BE SCALED.
DIMENSIONS, COORDINATES, AND LEVELS
SHOWN ARE NOMINAL AND SUBJECT TO
CONFIRMATION BY SURVEYOR.

SITE ADDRESS:

THREDBO CBD (CAT SHED)
NEAR SNOWGUMS CHAIRLIFT LOVERS LEAP
SNOWY MOUNTAINS NATIONAL PARK, NSW 2625

NOTES:

1. **BASIS OF DESIGN**
 - > SITE INSPECTION 07/11/13
2. **PANEL ANTENNAS**
 - > 1-OFF PER SECTOR (R2V4PX310R) AT EL 25.0m
 - > SECTOR 1 - 60°, SECTOR 2 - 120°, SECTOR 3 - 200°
 - > MOUNTED ON CIRCULAR HEADFRAME
3. **TRANSMISSION**
 - > THIS SITE SHALL BE LINKED TO THE NETWORK VIA OPTIC FIBRE, TO BE CONFIRMED BY OPTUS
4. **EQUIPMENT SHELTER**
 - > PHASE 8 (3m x 2.5m) SANDWICH PANEL SHELTER, COLOUR MATCH WITH EXISTING WORKSHOP FACADE (GREY)
 - > SUPPORTED ON BORED PIERS
 - > 45° GABLED SNOW ROOF TO FIT ON TOP OF STANDARD SHELTER. CONTACT 'ICS' FOR DETAILS.
5. **OPTUS TOWER/MONOPOLE**
 - > 25m HIGH STEEL MONOPOLE WITH CIRCULAR HEADFRAME AT EL 25m
6. **FEEDER CABLES**
 - > SIZE: 7/8" ALL SECTORS
 - > LENGTH: 30m ALL SECTORS
7. **SITE ACCESS**
 - > ACCESS TO SITE; CONTACT SCOTT Ph. (02) 6459 4124
8. **ANTENNA ACCESS**
 - > STEP-PEGS & 'LAD-SAF'
 - > LADDER & 'LAD-SAF' PROVIDED ON MONOPOLE
9. **POWER SUPPLY**
 - > POWER SUPPLY IS FROM CAT SHED WORKSHOP VIA UNDERGROUND CONDUITS. TO BE CONFIRMED BY OPTUS.

Rev	Date	Revision Details	Consultant	CAD	Designer	Verifier	Approver
04	07.11.14	MONOPOLE'S LOCATION UPDATED	CATALYST	NG	JK	TL	PB
03	07.08.14	DRAWING UPDATED	CATALYST	DRC	JK	TL	PB
02	05.06.14	ISSUED FOR APPROVAL	CATALYST	EN	JK	JK	PB
01	25.11.13	ISSUED FOR APPROVAL	CATALYST	EN	JK	JK	PB



Client:
yes OPTUS

Project:
**MOBILE NETWORK AUSTRALIA
PS301 - S8596 - A
THREDBO CBD (CAT SHED)
NEAR SNOWGUMS CHAIRLIFT**

Drawing Title:
DRAFT SITE LAYOUT

Drawing Status:
FOR APPROVAL

Drawing No:
S8596A-P1

Revision:
04

NOTE:
THIS DRAWING IS DIAGRAMMATIC ONLY
AND SHOULD NOT BE SCALED.

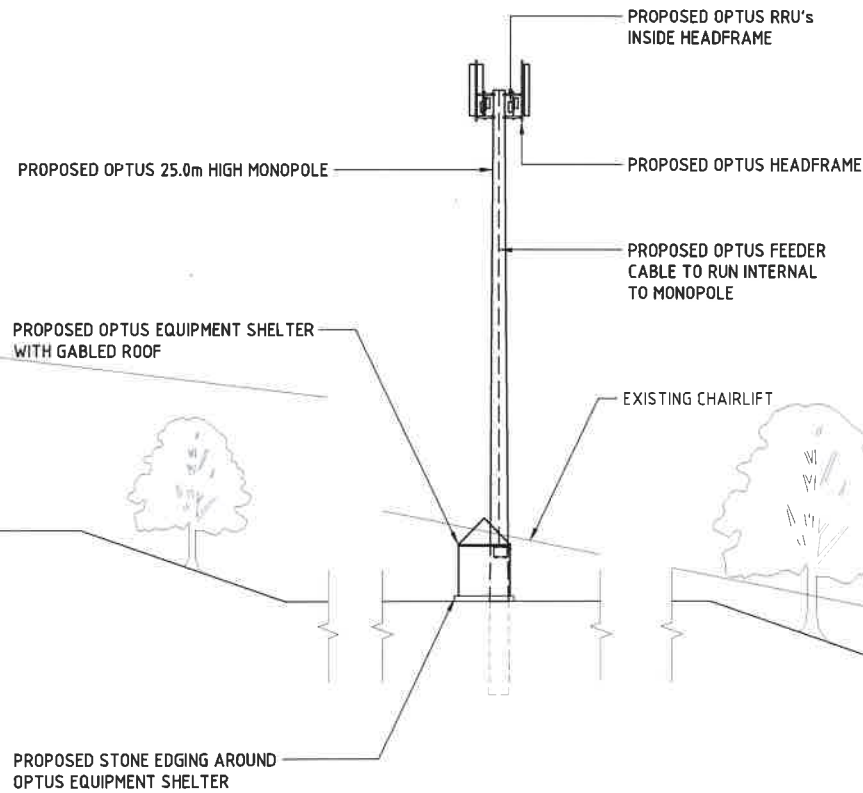
NOTE:
EXISTING ANTENNAS AS SHOWN ARE INDICATIVE
ONLY AND ARE BASED ON INFORMATION SUPPLIED
BY OTHERS AND/OR BY INSPECTION ON SITE.

EL 26.25m TOP OF PANEL ANTENNAS

EL 25.0m CL. 12 PORT PANEL ANTENNAS
(3 OFF) ON NEW CIRCULAR HEADFRAME

EXISTING WORKSHOP

EL 0.0m GROUND LEVEL
AT SHELTER



SOUTHWEST ELEVATION

SCALE 1:250

Rev	Date	Revision Details	Consultant	CAD	Designer	Verifier	Approver
04	07/11/14	MONOPOLE'S LOCATION UPDATED	CATALYST	NG	JK	TL	PB
03	07/08/14	DRAWING UPDATED	CATALYST	DRC	JK	TL	PB
02	15/04/14	ISSUED FOR APPROVAL	CATALYST	EN	JK	JK	PB
01	25/11/13	ISSUED FOR APPROVAL	CATALYST	EN	JK	JK	PB



Client: **yes OPTUS**
Project: **MOBILE NETWORK AUSTRALIA**
PS301 - S8596 - A
THREDBO CBD (CAT SHED)
NEAR SNOWGUMS CHAIRLIFT

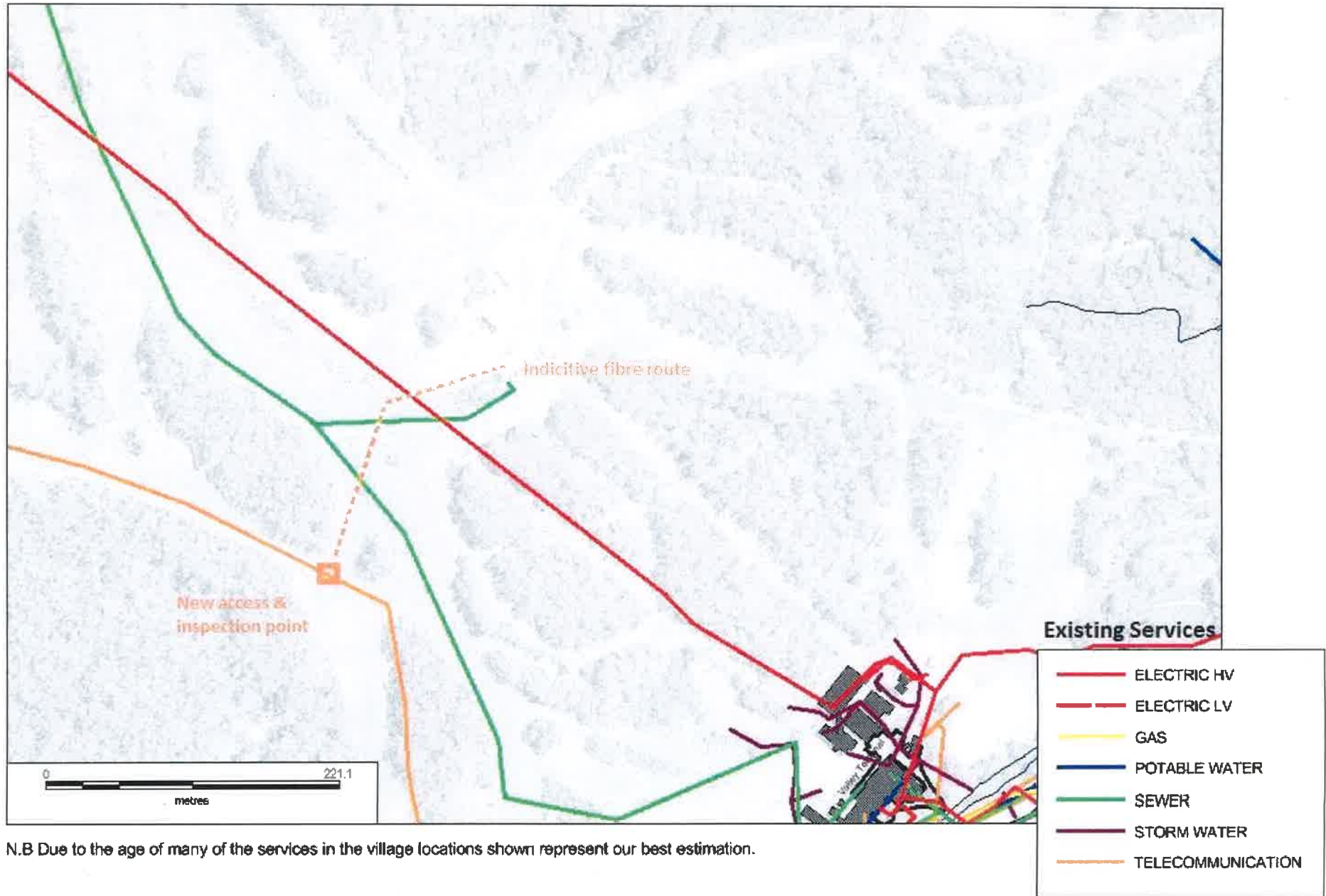
Drawing Title: **DRAFT SITE ELEVATION**

Drawing Status: **FOR APPROVAL**

Drawing No: **S8596A-P2**
Revision: **04**



Below Ground Services



N.B Due to the age of many of the services in the village locations shown represent our best estimation.